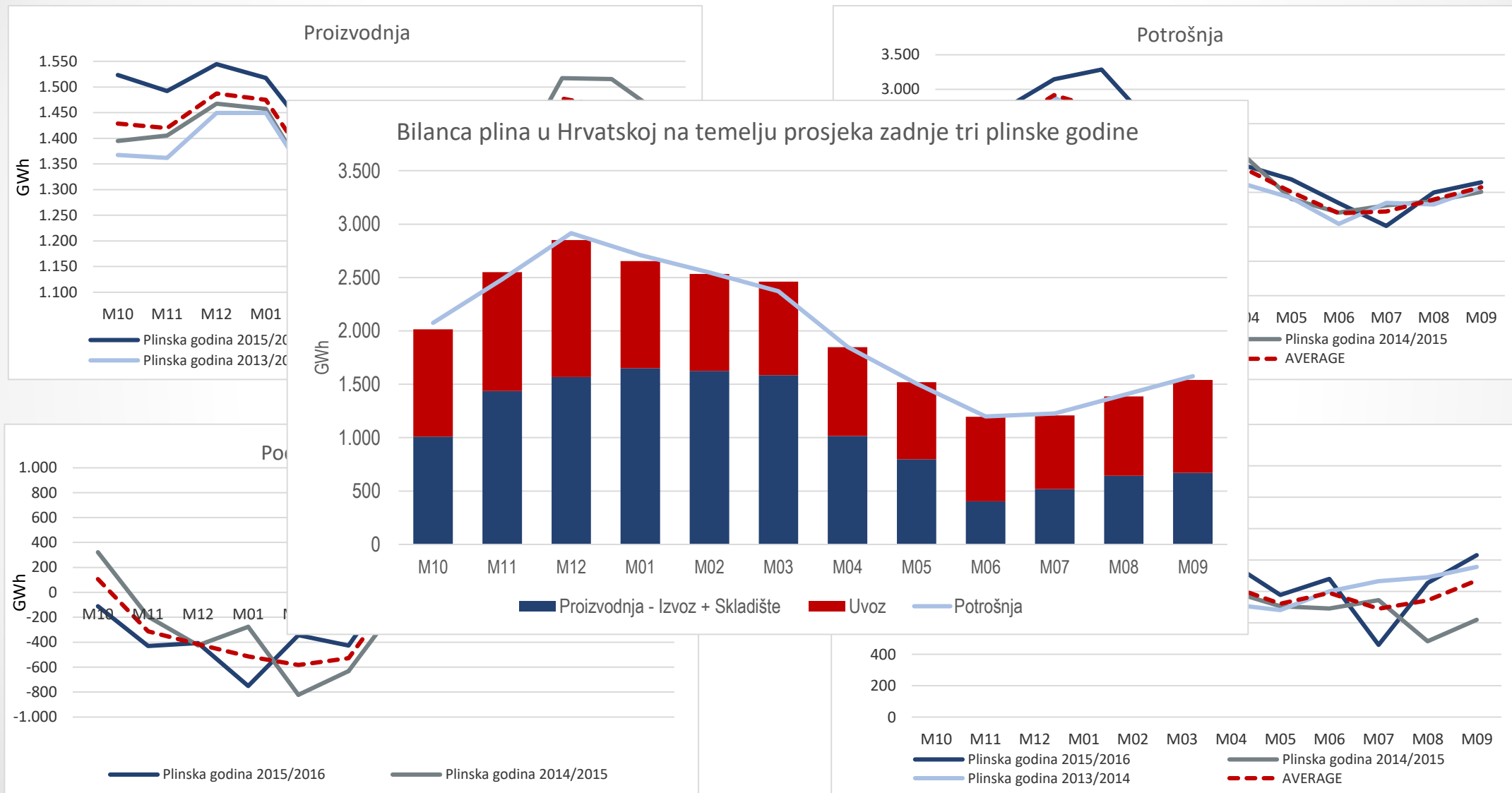


1. MBA ALUMNI KONFERENCIJA

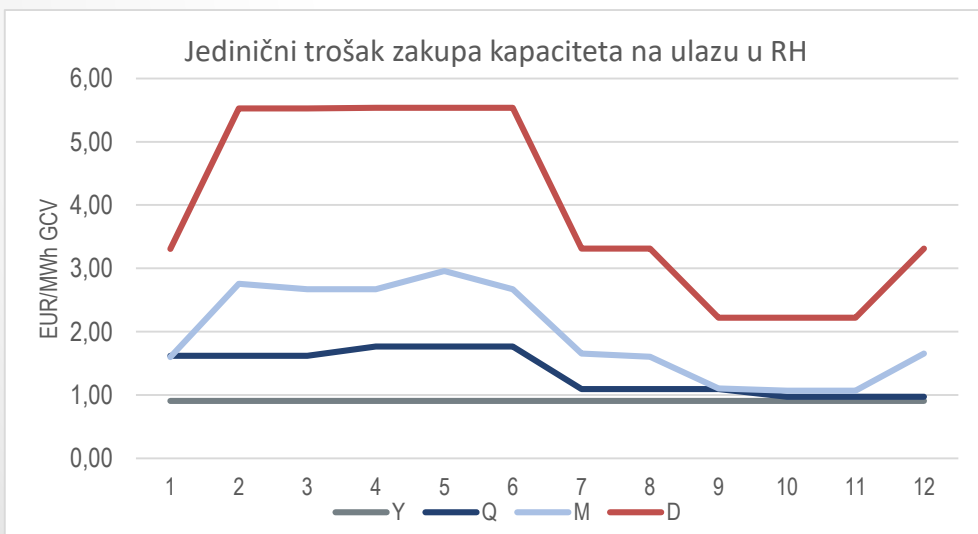
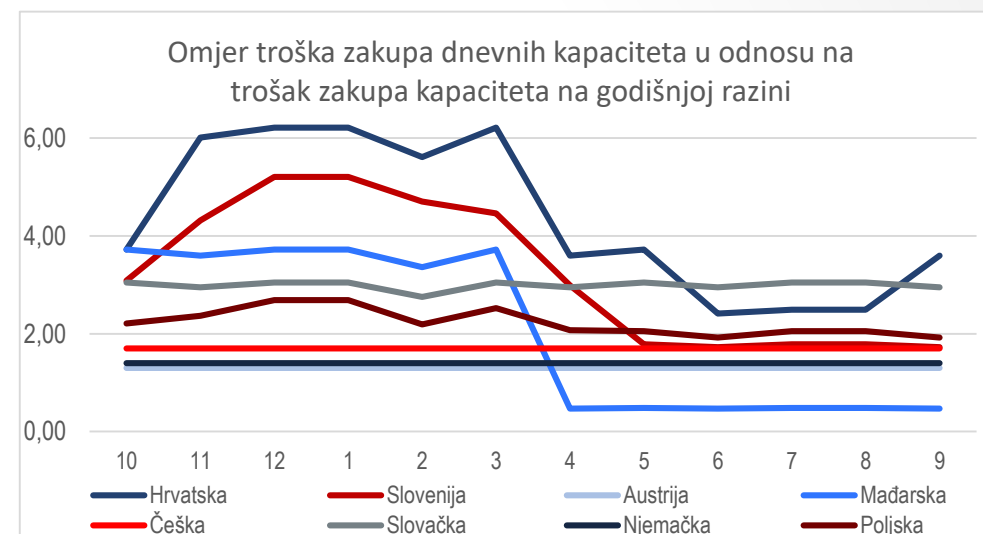
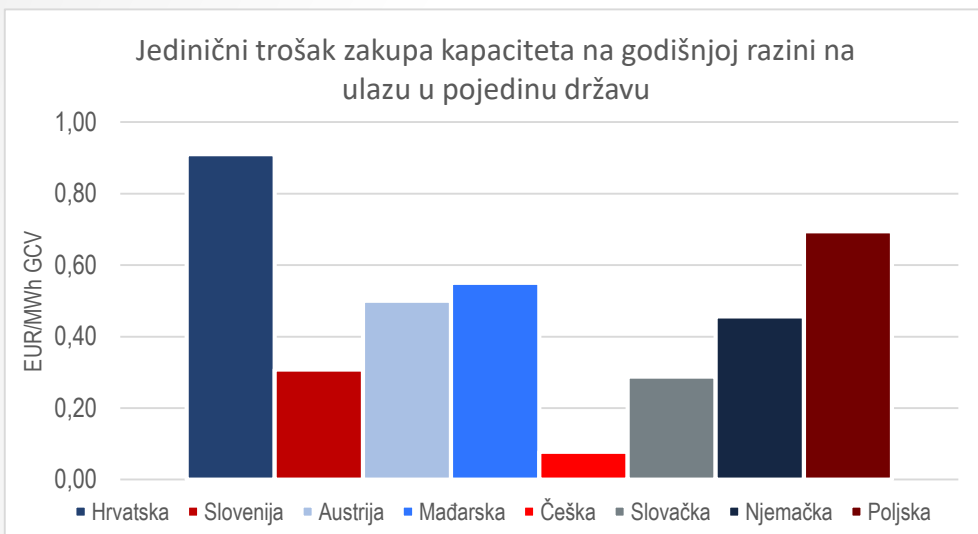
Utjecaj troškova zakupa transportnih kapaciteta na fleksibilnost i efikasnost plinskog sustava

Petra Čulina

Plin u Hrvatskoj



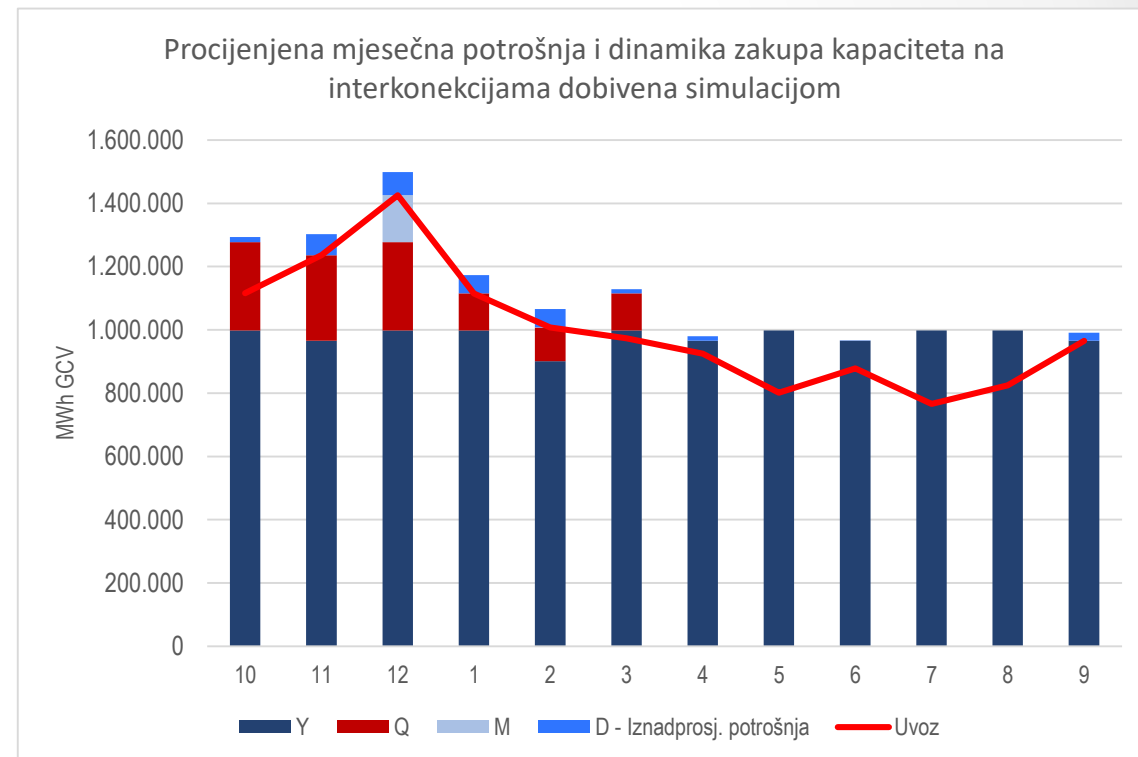
Tarifne stavke za stalni kapacitet na godišnjoj razini za ulaze i izlaze na interkonekciji



Predviđanje prihoda hrvatskog OTS-a od zakupa transportnih kapaciteta na interkonekcijama

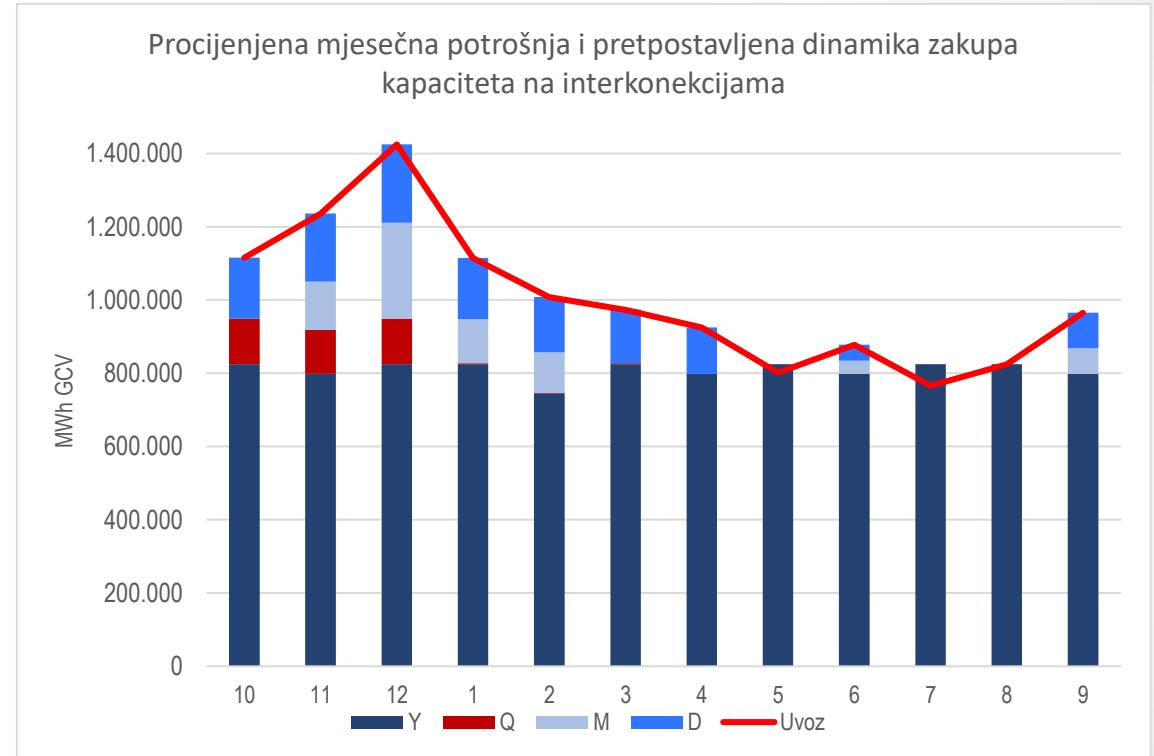
EUR/MWh GCV	Y	Q	M	D
M10.2017	0,91	1,62	1,61	3,32
M11.2017	0,91	1,62	2,77	5,55
M12.2017	0,91	1,62	2,68	5,55
M1.2018	0,91	1,77	2,68	5,55
M2.2018	0,91	1,77	2,97	5,55
M3.2018	0,91	1,77	2,68	5,55
M4.2018	0,91	1,10	1,66	3,33
M5.2018	0,91	1,10	1,61	3,33
M6.2018	0,91	1,10	1,11	2,23
M7.2018	0,91	0,98	1,07	2,23
M8.2018	0,91	0,98	1,07	2,23
M9.2018	0,91	0,98	1,66	3,33

Jedinični trošak zakupa kapaciteta na ulazu u Hrvatskoj



Optimizacija koeficijenata

Mjesec	Dn. var.
10	15%
11	15%
12	15%
1	15%
2	15%
3	15%
4	15%
5	10%
6	5%
7	5%
8	5%
9	10%



Optimizacija koeficijenata

Solver Parameters

Set Objective:

To: Max Min Value Of:

By Changing Variable Cells:

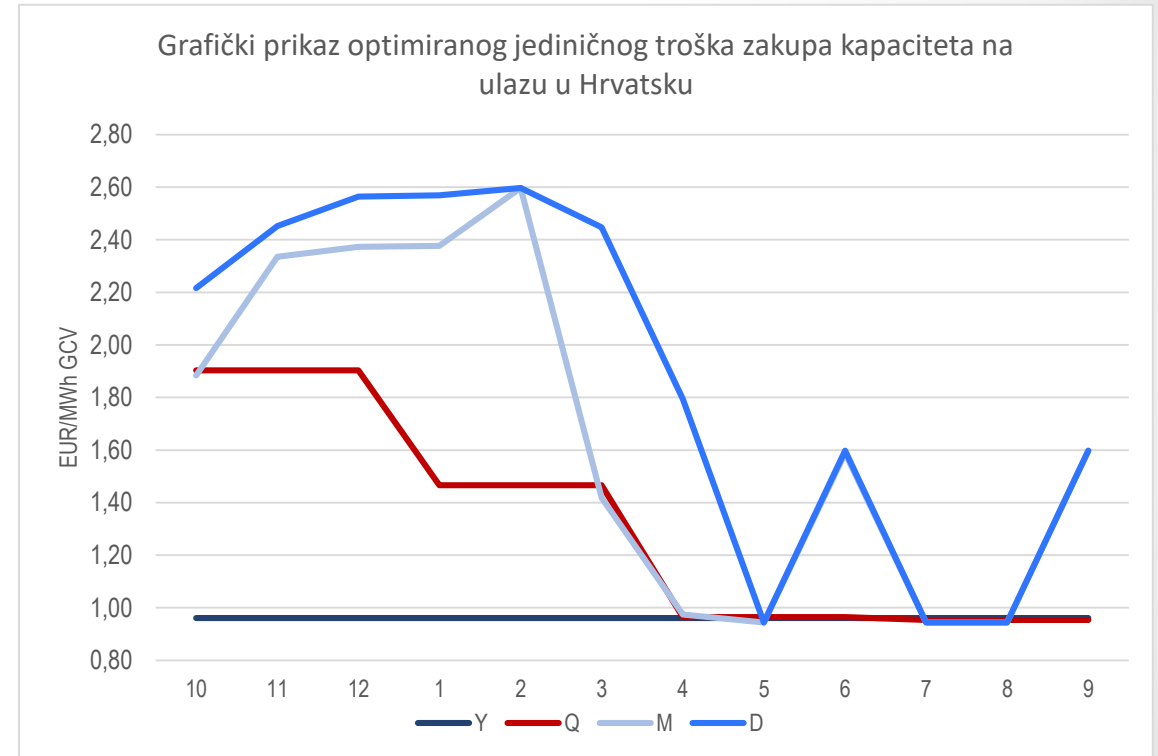
Subject to the Constraints:

-
-
-
-
-
-
-
-
-
-
-

Make Unconstrained Variables Non-Negative

Select a Solving Method:

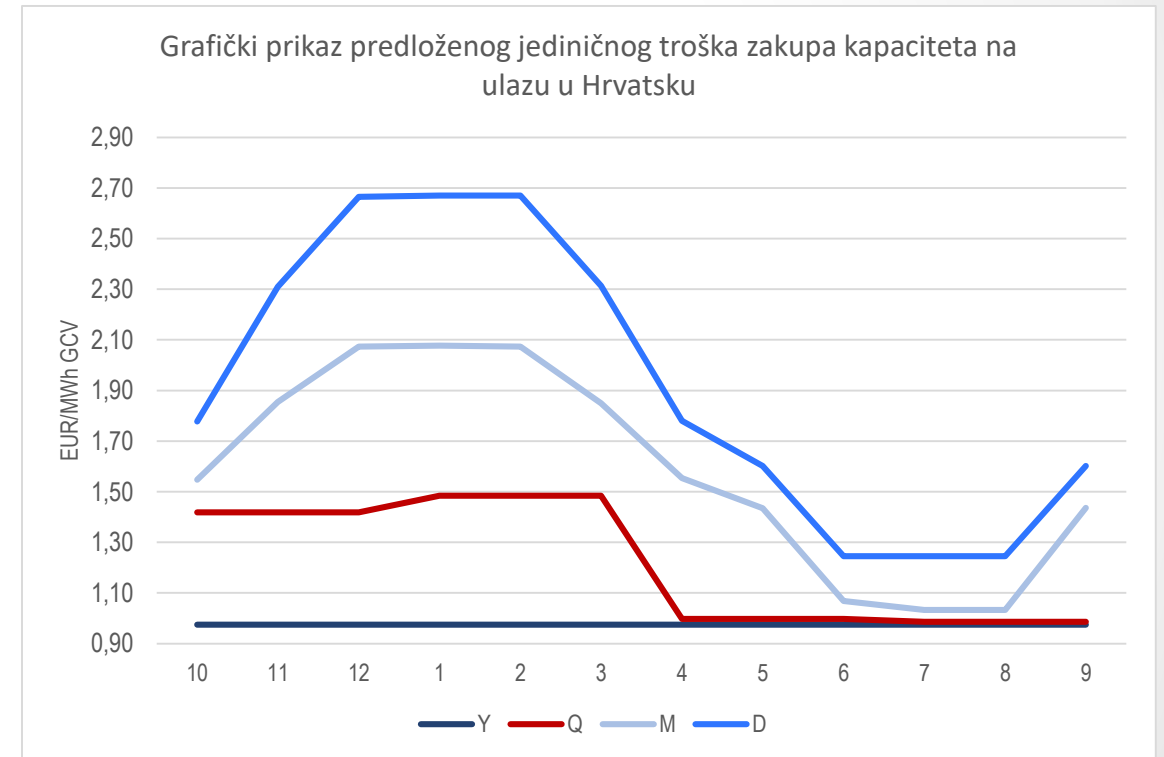
Solving Method
Select the GRG Nonlinear engine for Solver Problems that are smooth nonlinear. Select the LP Simplex engine for linear Solver Problems, and select the Evolutionary engine for Solver problems that are non-smooth.



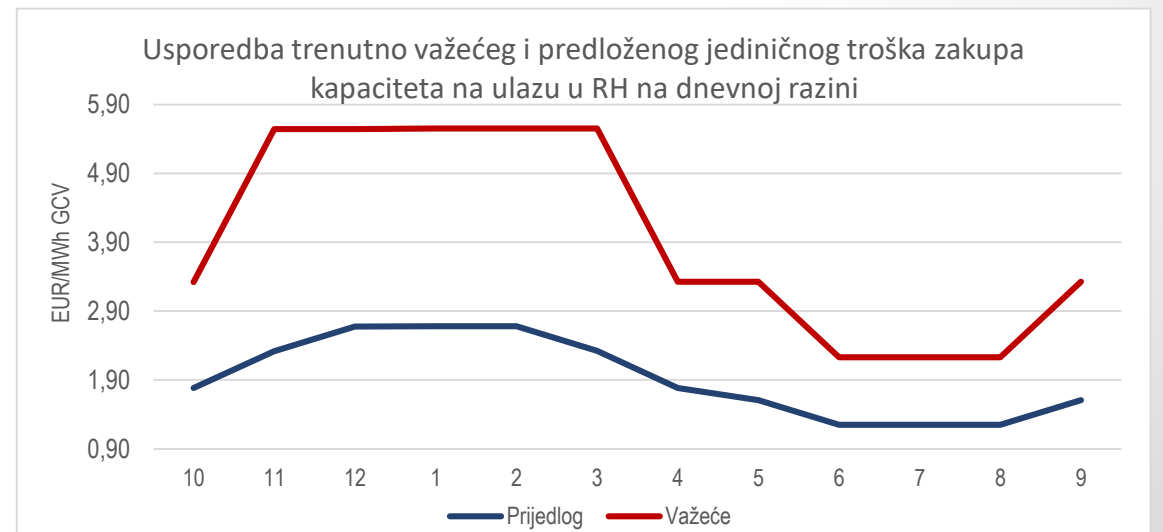
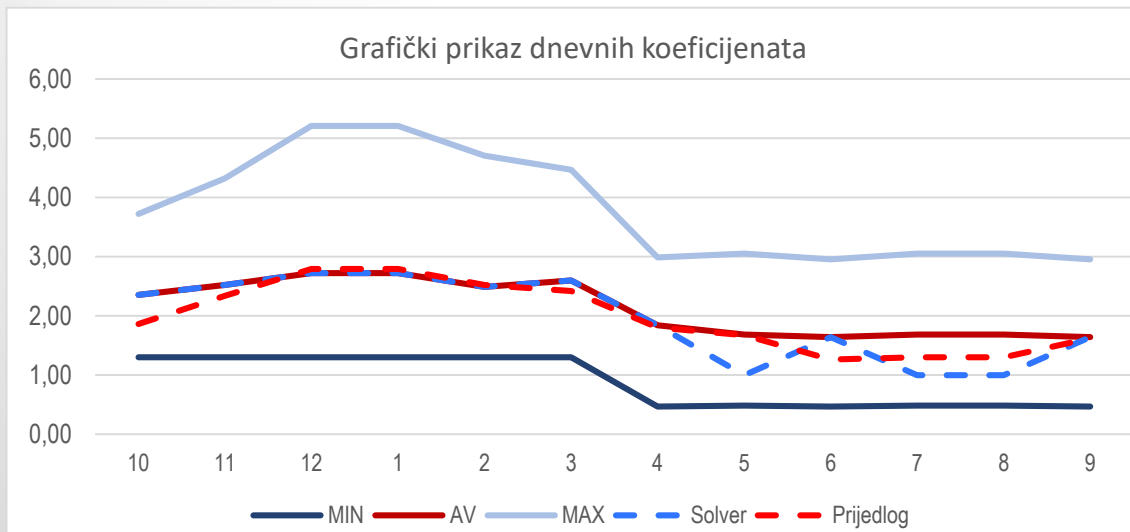
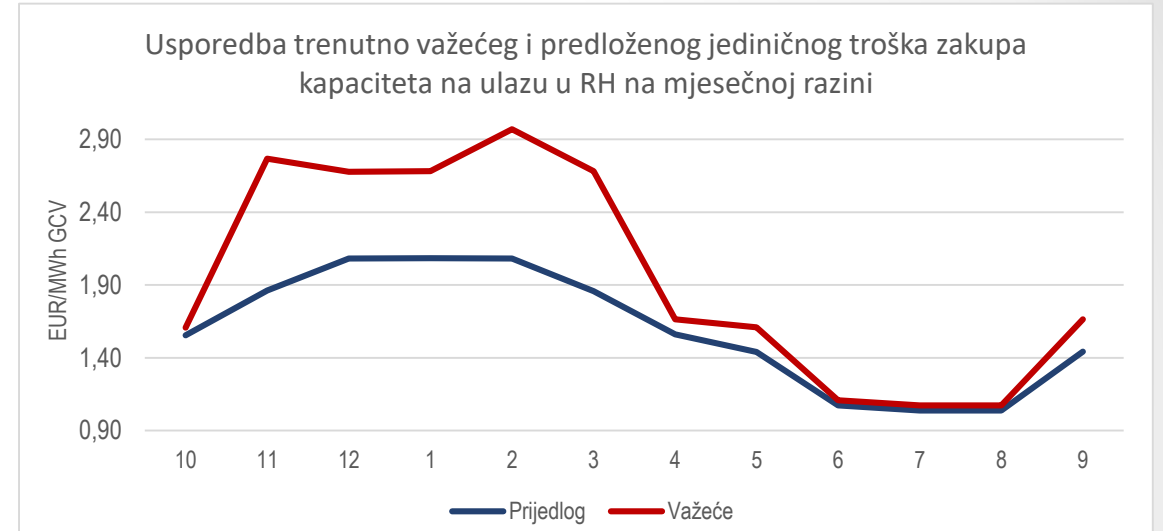
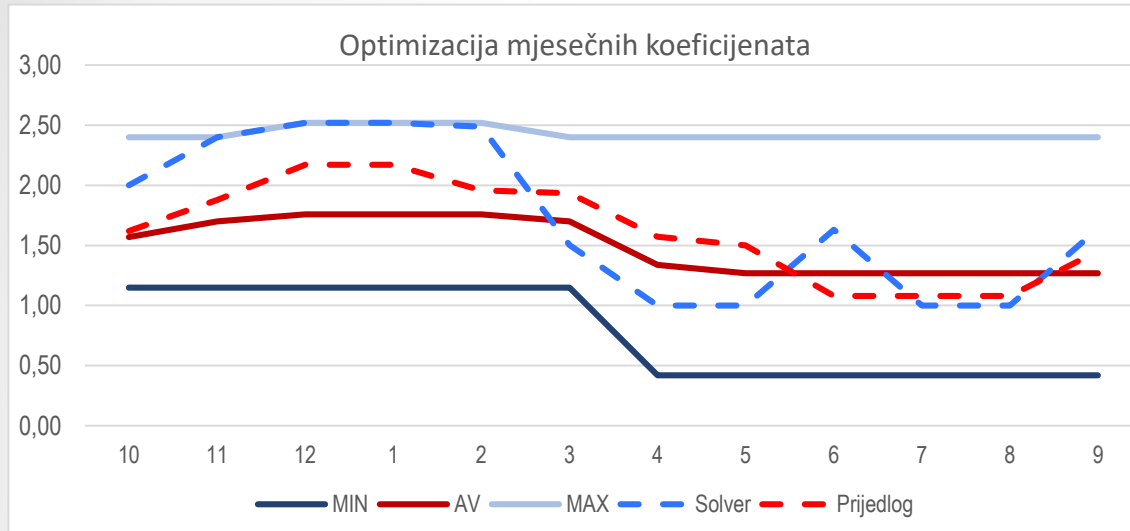
Prijedlog koeficijenata

EUR/MWh GCV	Y	Q	M	D
M10.2017	0,98	1,42	1,55	1,78
M11.2017	0,98	1,42	1,86	2,32
M12.2017	0,98	1,42	2,08	2,67
M1.2018	0,98	1,49	2,08	2,68
M2.2018	0,98	1,49	2,08	2,68
M3.2018	0,98	1,49	1,86	2,32
M4.2018	0,98	1,00	1,56	1,79
M5.2018	0,98	1,00	1,44	1,61
M6.2018	0,98	1,00	1,07	1,25
M7.2018	0,98	0,99	1,04	1,25
M8.2018	0,98	0,99	1,04	1,25
M9.2018	0,98	0,99	1,44	1,61

Predloženi jedinični trošak zakupa kapaciteta na ulazu u Hrvatsku



Prijedlog koeficijenata



Hvala na pozornosti